



MODULAR  
**TINY HOUSES**  
VERSION A



ENZO takes on all aspects of architecture: design, urbanism, landscapes and interiors. We make sure the building and its surroundings are one integrated design. With inspiration and our full attention we bring this integrated approach into practice. We don't do this alone, but together with our business and private clients. And together with our team. Meanwhile the ENZO team counts 18 colleagues. The name ENZO reflects the team-feeling. 'We didn't want to become architecture firm Van Rijn and Abdul. We do it together.'

**ENZO** architectuur **N** interieur

+31 (0)172 50 30 90  
info@enzoarchitecten.nl



Aulis Lundell Ltd is a leading Scandinavian manufacturer of cold rolled LGS profiles, sustainable offsite modular buildings and prefabricated panelized systems.

The company is a Finnish family business and has delivered LUNDELL-PROFILE products manufactured from hot dip galvanized steel plate by roll forming technology since 1980.

Aulis Lundell Ltd is located in Lohja, Finland and operates in 6000 m<sup>2</sup> of product facilities. Additional factory space of 5000 m<sup>2</sup>, which will accumulate the production capacity of both modules and panels dramatically, is under construction and will be ready in summer 2023 to meet the demands of MMC customers throughout Europe.

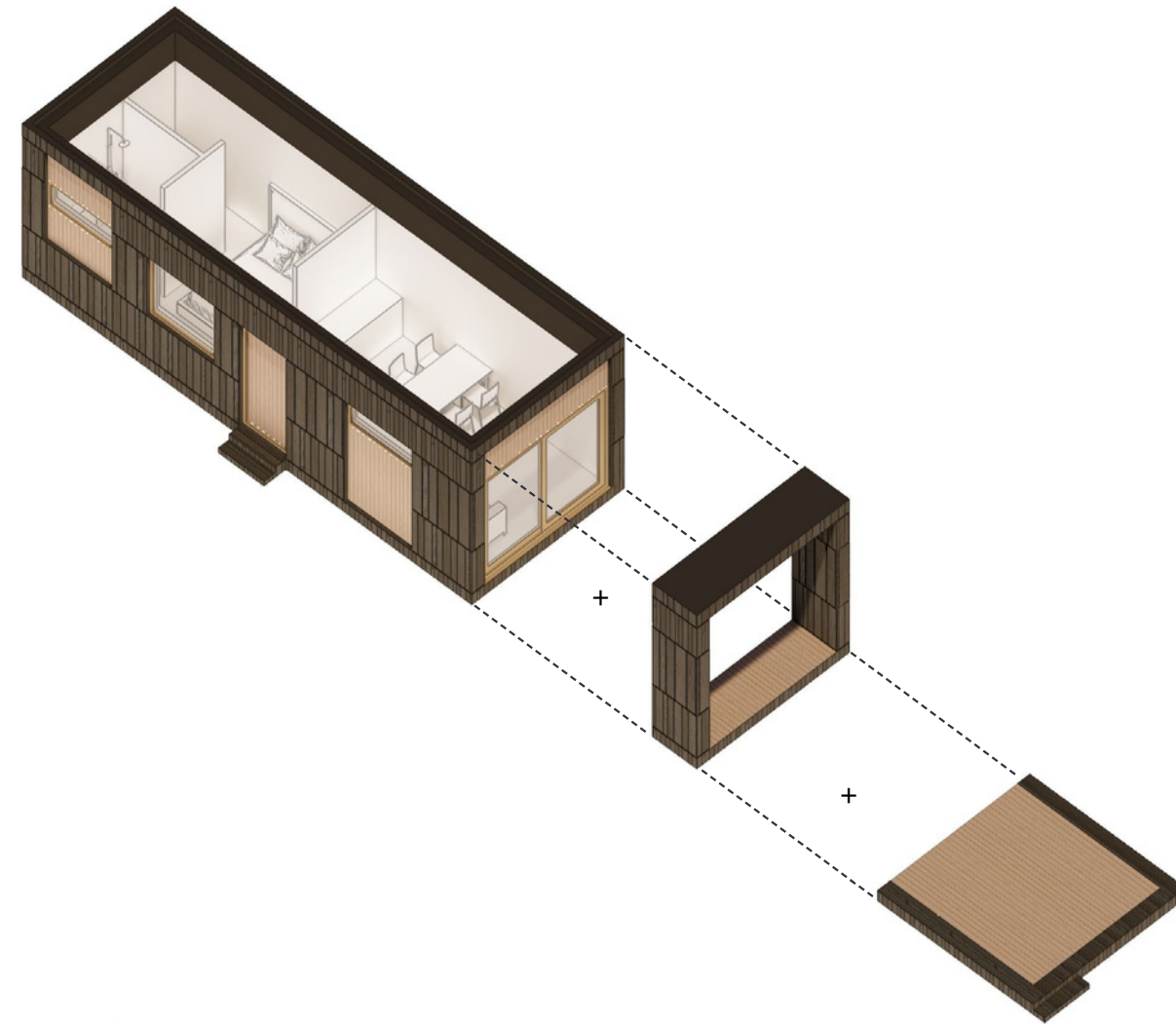
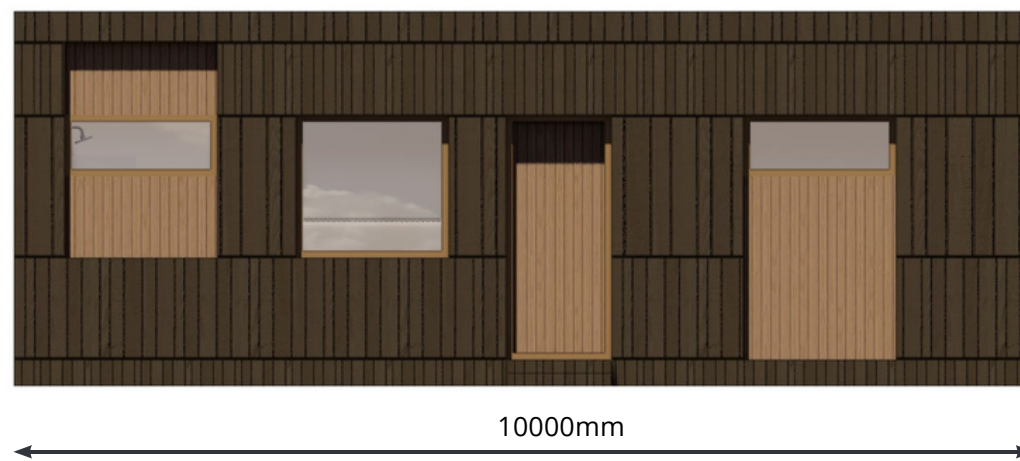
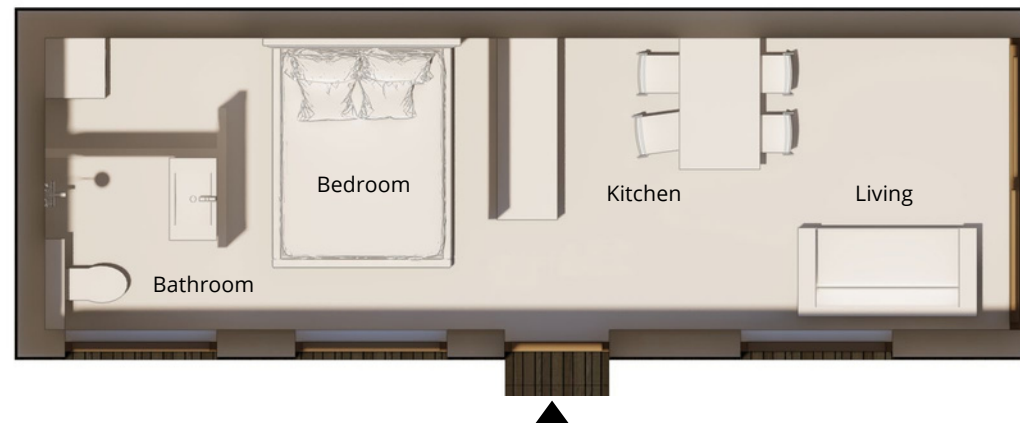
**Aulis Lundell Oy**

Edzo Bosma

+31 (0)85 021 09 01 (Tel)  
+31 (0)6 5105 4280 (Mob)  
edzo.bosma@aulislundell.com

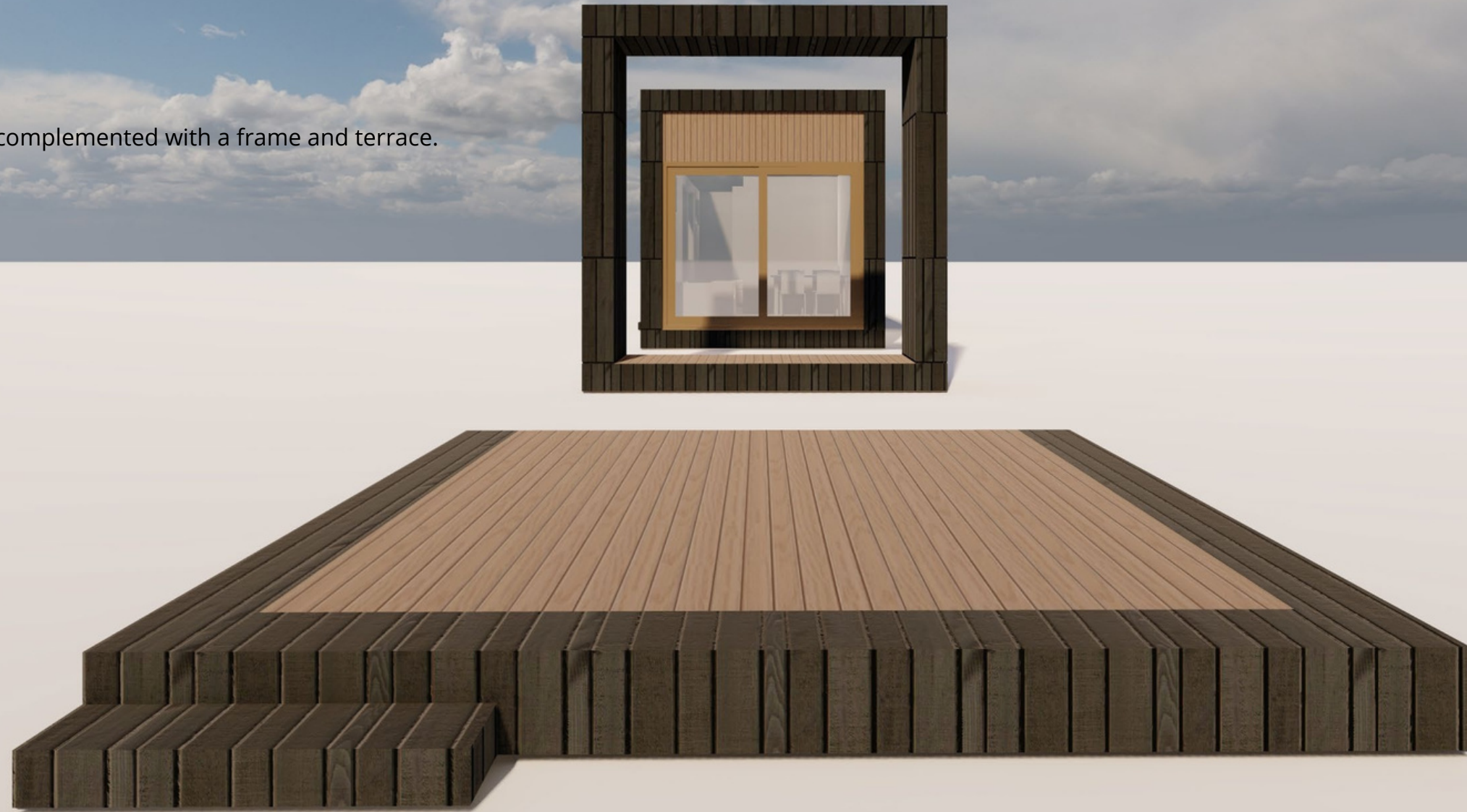
# TINY HOUSES BASE UNIT

The base unit can be complemented with a frame and terrace.



TINY HOUSES  
BASE UNIT

The base unit can be complemented with a frame and terrace.



TINY HOUSES  
**COMBINING**

The different units can be combined to form an playful ensemble.



TINY HOUSES  
**COMBINING**

This way the number of blind facades is reduced.



TINY HOUSES  
**COMBINING**

Because of the playfull ensemble there are interesting places for people to stay and socialize.



# IMPRESSIONS



Dark shell  
Light infill

Patio

Tiny houses - Impressions



# IMPRESSIONS



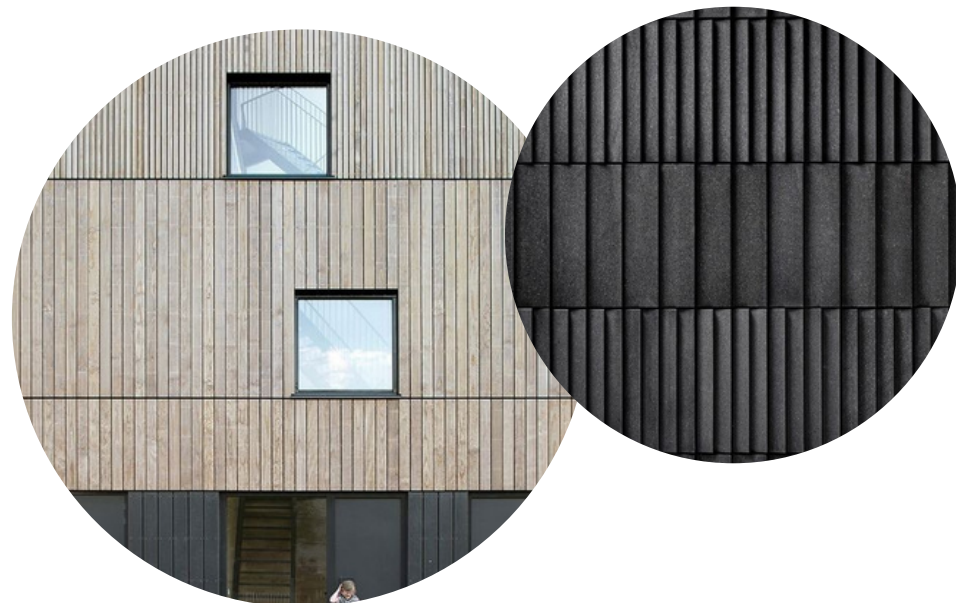
MATERIALS  
IMPRESSIONS



Wood cladding - Planks of different sizes - two tones to distinguish openings in the facade.



Thin bricks - Lightweight brick facade  
*Feldhaus klinker - Thin bricks*



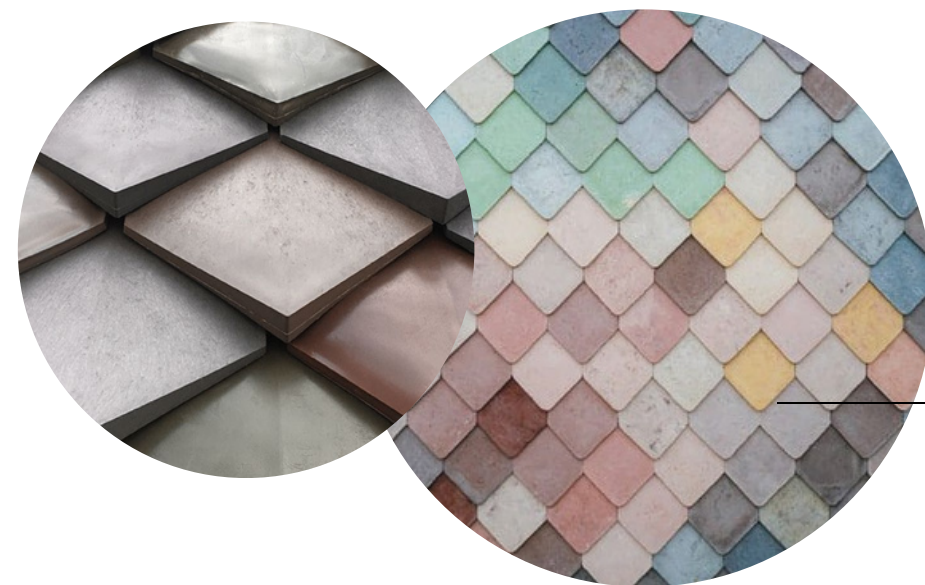
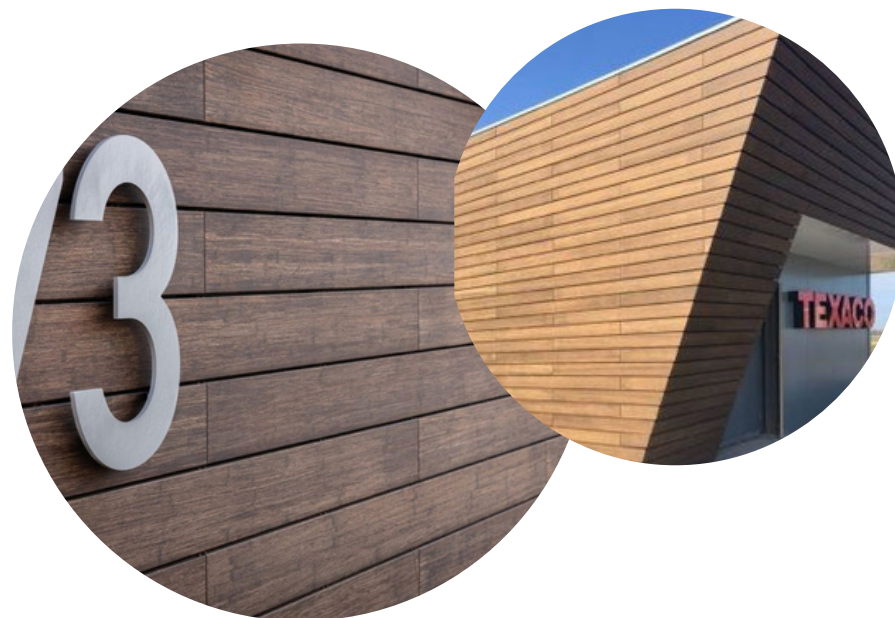
MATERIALS  
IMPRESSIONS



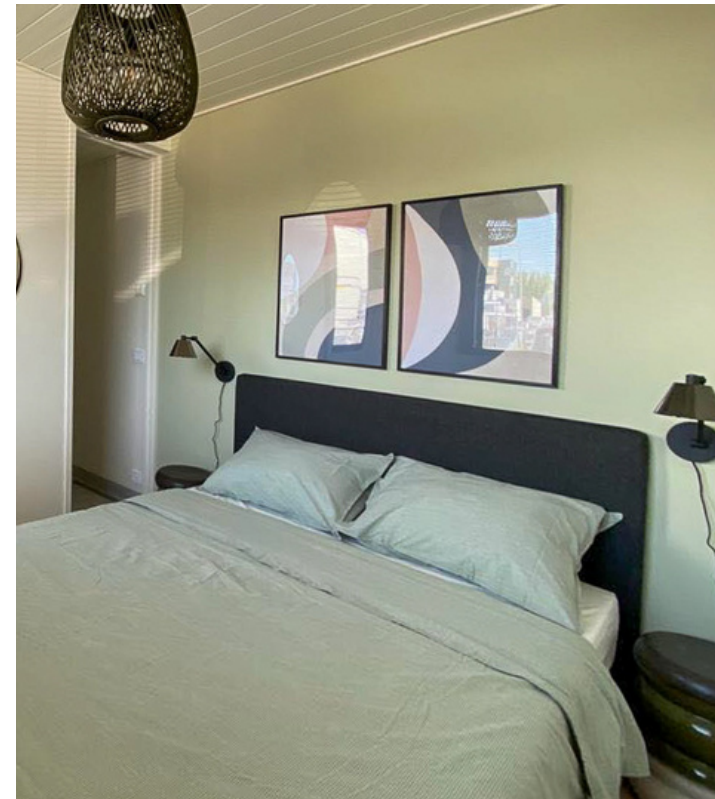
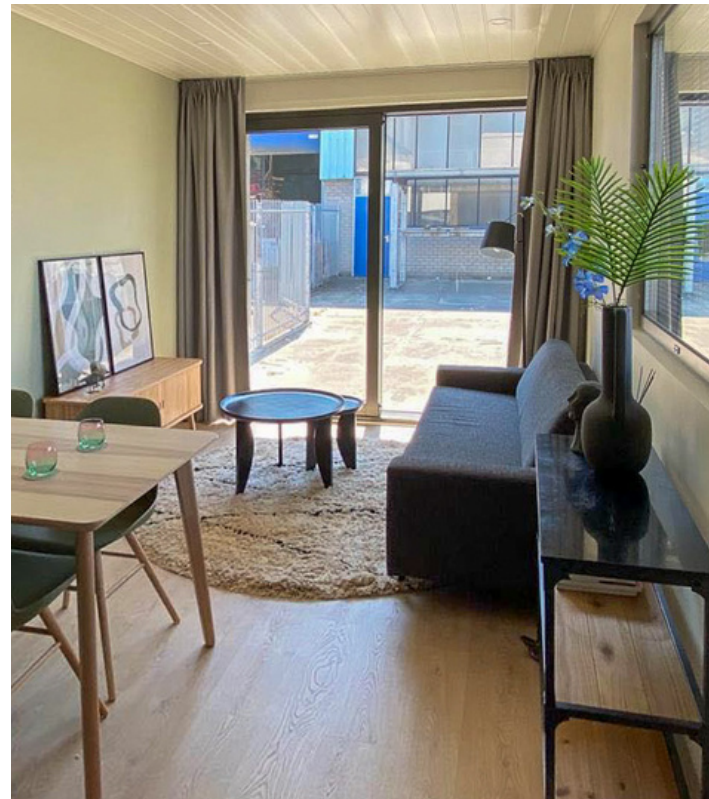
Bamboo Cladding - Comparable to an ordinary wood facade but reducing the carbon footprint  
*Moso Bamboo - Bamboo x-treme cladding*



Recycled plastic tiles - Upcycled diamond shaped shingles made from PVC waste  
*Pretty plastic - 'First One' - Terracotta color*



MATERIALS  
INTERIOR



Interior design : different options - *make your home beautiful*

We offer the interior creation of your room



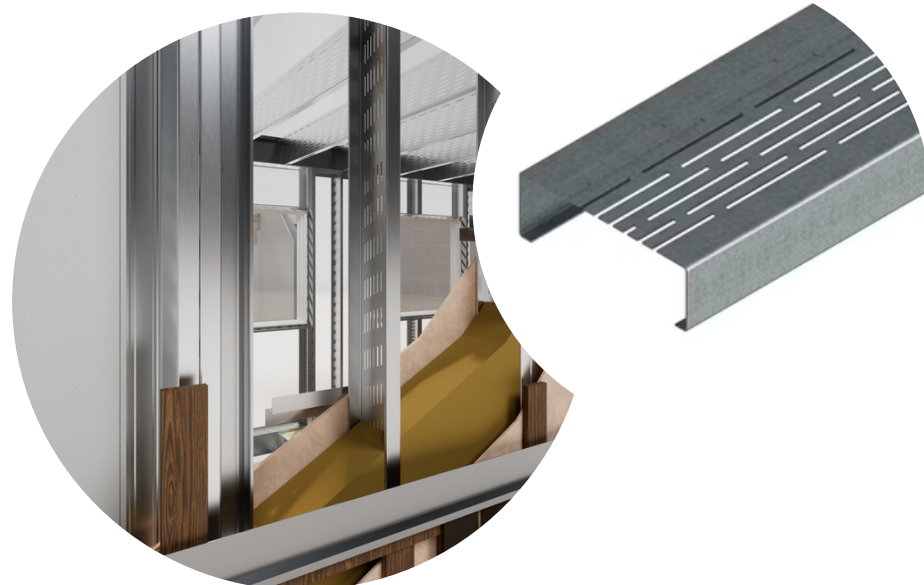


## MATERIALS

# STEEL STRUCTURE



• U-values of structures: 0,11-0,18



- Light steel structures support carbon neutral construction and Aulis Lundell has already achieved 2025 EU low-carbin regulatons in it's award winning house Pyörre 2021
- Steel is 100% recyclable material and company use 30% recycled steel
- Part of our steel products is 100% recycled, carbon neutral steel
- We have own 13 roll-forming machines with company inventions, such as a perforation of "Thermo profile" for building structures
- A unique structure "Thermoprofile" is a core structure of Lundell LUNDELL XMOD modular buildings for roofs, floors and walls, and can be used for high-rise buildings as a thermal cover (for example, in column and slab buildings)
- All modular buildings can be stackable, up to 17 floors
- 40 years of building system development and manufacturing experience
- Quality policy includes ISO 9001:2015, EPD and CE certificates
- Offsite roll-forming, manufacturing, and assembly of modules onsite is safe and fast
- Steel allows to use any cladding and interior bords and materials: brickslips, wood, composite or metal
- Steel structure building can stand 100 years and more
- Company has fire and acoustic tests and solutions for own structures
- All products have an EPD and CE certificate. Company has ISO 9001-2015 certificate

Structural steel components

# DECLARATION OF PERFORMANCE

in accordance with Construction Products Regulations (EU)  
No 305/2011 N° 004\_DoP\_1090

1. **Unique identification code of the product type:**  
LUNDELL PANEL
2. **Product types:** See table in point 9
3. **Intended use:** External load bearing walls
4. **Manufacturer:**  
Aulis Lundell Oy, LUNDELL-PROFILE, Tarrankuja2, 08100 Lohja, FINLAND
5. **Authorised representative:** N/A
6. **Verification of constancy:** 2+
7. Determination of the product type, on the basis of type testing and factory production control (FPC), in accordance with EN 1090-1:2009+A1, has been performed by the Eurofins Expert Services Oy 0809-CPR-1079:
8. **European Technical Assessment:** N/A
9. **Declared performance:**

| Essential characteristics           | Declared performance   | Harmonised technical specification/<br>Specific Technical Documentation |
|-------------------------------------|--|---|
| CE Designation :                    | PANEL 275, 300, 325  | EN 1090-1:2009+A1:2011  |
| Reaction to fire:                   | A1   | EN 1090-1:2009+A1:2011  |
| Fire resistance:                    | REI60  | EN 1090-1:2009+A1:2011  |
| Material strength Re / Rm:          | ≥ 350 Mpa / ≥ 420 Mpa  | None<br>EN 1090-1:2009+A1:2011  |
| Environmental impact:               | Hazardous substances<br>Indoor emissions<br>Recyclable:              | None<br>EN 1090-1:2009+A1:2011 -<br>Yes                                 |
| Material specification:             | S350GD+Z, standard EN10346:2009<br>According to suitable EN standard | EN 1090-1:2009+A1:2011  |
| Weldability:                        | EC3  |   |
| Durability:                         | EC3  |   |
| Tolerances on dimensions and shape: | EN 1090-2, EN 10162  | EN 1090-1:2009+A1:2011  |
| Execution class:                    | EN 1090-2, EXC2  | EN 1090-1:2009+A1:2011  |



Eurofins Expert Services Oy has performed initial inspection of the manufacturing plant and factory product control and continuous surveillance, assessment and evaluation of factory production control and issued to Aulis Lundell Oy factory production control certificate 0809-CPR-1079.

Signed for and on behalf of the manufacturer by:

Lohja 1.7.2022, Leena Lundell, Chairman of the Board

**EN  
ZO**®

**AL**  
**LUNDELL OY**

**IC**  
INTERIOR CONSULT

[www.enzoarchitecten.nl](http://www.enzoarchitecten.nl)

[www.aulislundell.com](http://www.aulislundell.com)

[www.interior-consult.com](http://www.interior-consult.com)